



In-Person Education & Events
Sept 20-23, 2023
Pennsylvania Convention Center
Philadelphia, PA USA

In-Person Trade Show
Sept 21-23, 2023

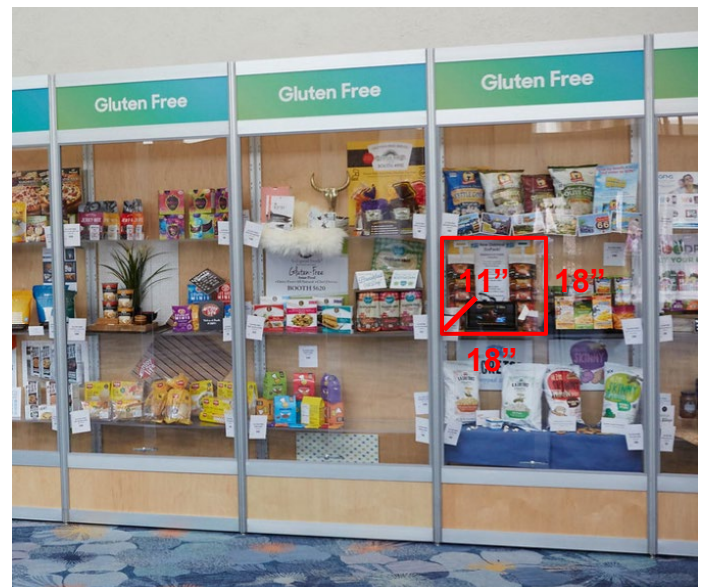
LOGISTICS & SPECIFICATIONS: Product Showcases

Thank you for purchasing a Product Showcase. To meet the deadlines and specifications for this opportunity, please read the following information in its entirety. If you have any questions, contact your Client Service Specialist using the contact information listed below.

Product Showcase Unit Sizes:

- **Category of Showcase:** Business Solutions, Frozen/Refrigerated, Grocery, Hot Products, Lifestyle, Organic (certified), Specialty Diet, and Vitamin/Supplements.
 - 18" H x 18" W x 11" D
- **Category of Showcase:** Bulk & Food Service
 - 30" H x 18" W x 11" D

Example of Product Showcase Unit



Guidelines:

- **Supplies:** Exhibitors are responsible for bringing any necessary supplies to set up the Product Showcase(s). We recommend bringing tape, scissors, staplers, and/or markers.
- **Weight:** Product displays **CANNOT exceed 20lbs** in weight. Anything exceeding this limit will be removed.
- **Electricity:** Electricity is not provided or allowed in the showcases. Battery operated lights or moving display objects are welcome.
- **Signage:** Product Showcases are assigned alphabetically within the category contracted based on "EXHIBITING AS" name and cannot be changed onsite.
- **Security:** Although we make every effort to secure the Product Showcase area, New Hope is not liable for any lost or damaged goods while in the display area.
We advise that you utilize empty bottles & packages for displays

DO NOT TAMPER WITH OTHER DISPLAYS. Tampering will result in your product showcase being eliminated; this includes moving name tags.

- **Removal:** Remove everything from the showcase at the time listed below under "Product Removal". All products left in the showcase after the "Left Products Donated" time will be donated to a local food bank.

Setup Schedule:

Please refer to your contract for the category you selected. The showcase units will only be open and accessible during these times.

All Product Showcases will be in the PCC Grand Hall				
	Wednesday, 9/20	Thursday, 9/21	Friday, 9/22	Saturday, 9/23
Set-Up	10:00am-5:30pm			
Adjustments Times		8:30-9:30am 12:00-1:00pm 5:30-6:30pm	8:30-9:30am 12:00-1:00pm	8:30-9:30am
Product Removal				4:00-5:30pm
Left Products Donated				5:30pm
Showcase Office Hours	8:00am – 6:30pm	8:00am – 6:30pm	8:00am – 6:30pm	8:00am – 5:30pm

Purchasing Onsite:

To purchase onsite or if you have issues, please visit the Product Showcase Office located on the PCC Level 200 Bridge, Room 204 C. Please note showcase signage and location cannot be changed onsite.

Removal:

Saturday, September 23rd: 4:00pm – 5:30pm the showcase doors will not, under any circumstances, be unlocked prior to 4:00pm. Any products left in the showcase at 5:30pm will be donated. New Hope Network is not responsible for any products or display articles left after 5:30pm on Saturday, September 23rd.

Please note that if you have multiple product showcases in the same category, they are NOT guaranteed to be on the same shelf. For example, per the picture below, you could have spots 1 & 2 or 2 & 3 or 4 & 5, etc. Product showcases are arranged in alphabetical order by the "Exhibiting As" name listed in your exhibitor console.



Questions today? Contact us!
Client Service Specialist
(p) 303-390-1776
(e) esk@newhope.com